

# Amplify

## Commercial CO Protection SL-701 Duct Mounted CO Detectors



Duct Mounted CO Detector continuously monitors level of Carbon Monoxide at the common offender of CO emissions:  
Central AHU

THE **SL-701 DETECTOR** SAMPLES THE AIR STREAM AT THE AHU SUPPLY AND/OR RETURN. IN THE EVENT DANGEROUS LEVELS OF CO ARE DETECTED, THE SL-701 WILL SHUT DOWN THE AHU TO PREVENT THE SPREAD OF HARMFUL GAS TO OCCUPIED SPACE.



THE **MSR-50/CO** REMOTE INDICATOR AUDIBLY AND VISUALLY NOTIFIES FACILITY SAFETY MANAGEMENT OF THE SITUATION.

### Gain Trust and Confidence as a Complete Solutions Provider



The SL-701 Duct Carbon Monoxide Detector provides early detection of invisible carbon monoxide in air moving through the HVAC duct supply, return, or both in commercial, industrial, or residential applications.

NFPA 720-2009 standardizes CO detection for all buildings, to include schools, hotels, nursing homes and other commercial structures. Chapter 4, 4.3.1.2 states, "Where no carbon monoxide product listing standard exists, products listed for fire alarm service shall be permitted provided all the requirements of this standard are met."

The SL-2000 duct smoke detector from APC is UL Listed to UL268A, UROX, UROX7. The SL-701 utilizes all the same SL-2000 components except for the UL-recognized CO sensor which replaces the smoke sensor.

The SL-701 is a CO System Detector, it is not a smoke detector or a CO alarm.

### Healthier Environment with a Proactive Life Safety Slant



NFPA 720-2009 chapter 5, 5.5.5.4.1 states that, "System designers shall consider the spread of carbon monoxide through an occupancy through the HVAC system." The SL-701 addresses this directly.

Automation functions from simple relay logic to robust, complex interfaces are easily achieved utilizing the dry contacts of this conventional detector.

Designed to prevent the circulation of CO by air handlers, fans and blowers, complete systems may be automatically shut down in an alarm state; HVAC fresh air intake and / or exhaust systems can be engaged; interaction with provided smoke control systems can be coordinated.

At the most basic level, when an SL-701 is installed, facility management is alerted to CO exposure the instant dangerous levels are detected within the ductwork, prior to full circulation into the conditioned space.

### Easy To Order, Install, Test & Perform Regular Maintenance



The SL-701-KIT is available, offering the convenience of a complete package containing:

- SL-701 Duct CO Detector
- FAST Tube sampling tubes
- MSR-50/CO Remote Accessory featuring Temp-4 audible and LED-based strobe visual alarm indications
- Mounting templates, hardware and installation instructions

Also available:

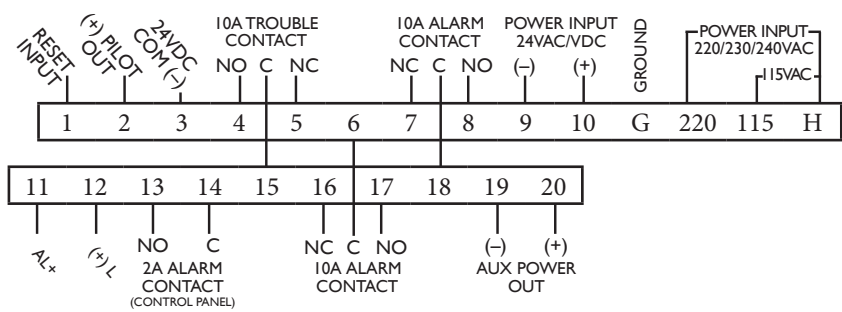
- TG-701 Aerosol CO for testing
- AV-Checker - Measures air velocity
- Duct-Checker - Measures pressure differential to confirm proper duct detector operation

PROUD TO BE MADE IN THE USA BY

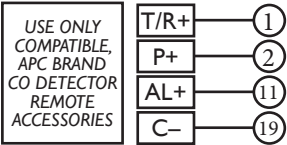
**AIR PRODUCTS AND CONTROLS**  
*You in Control*

www.ap-c.com • 888-332-2241

WIRING



MSR-50/CO WIRING



PRODUCT SPECIFICATIONS

MODEL NUMBER:	SL-701	230VAC, 115VAC, 24VAC, 24VDC
SENSOR MODEL NUMBER:	SL-701	7-CO
APPROVALS	Electrochemical Carbon Monoxide Sensor is a UL Recognized component in accordance with the requirements of UL2034. Also meets EN50291 requirements. SL-2000 Series Duct Smoke Detector Fire Alarm Certifications referenced side one: UL & CUL Listed (UL268A, UROX, UROX7) File # S2829 CSFM Listed (3240-1004:105); MEA Accepted (73-92-E, VOL. 27)	
SAMPLING TUBES:	<b>FAST Tube</b> <b>STN-2.5</b> <b>STN-5.0</b> <b>STN-10.0</b>	Sectional sampling tube Metal sampling tube for 6" to 2.5' duct width Metal sampling tube for 2.5' to 5.0' duct width Metal sampling tube for 5.0' to 10.0' duct width
ACCESSORIES:	(All available from Air Products and Controls Inc.) MSR-50/CO remote accessory TG-701 aerosol test gas T-PB power supplies WP-2000 weatherproof enclosure	
POWER REQUIREMENTS:	Input Power	Standby Current      Alarm Current
	24VAC	55mA                      190mA
	24VDC	14mA                      68mA
	115VAC	22mA                      32mA
	230VAC	12mA                      18mA
RELAY CONTACT RATING:	Alarm Contacts:      Resistive load: 2 sets form "C" rated at 10 Amps @ 115VAC	
	Trouble Contacts:      Resistive load: 1 set form "A" rated at 2 Amps	
	Resistive load: 1 set form "C" rated at 10 Amps @ 115VAC	
AIR VELOCITY:	100 to 4,000 ft./min.	
AMBIENT TEMPERATURE:	32°F to 158°F (0°C to 70°C)	
HUMIDITY:	10% to 85% RH Non-Condensing / Non-Freezing	
WIRING:	Solid or stranded: #12 to #22 AWG terminals	
MATERIAL:	Grey plastic backbox, clear plastic cover (Makrolon 94V-0) Do not expose to corrosive atmospheres	
DIMENSIONS:	13 1/2" L x 4 1/2" W x 2 1/4" D	
MAX. NET WT.:	2 1/2 lbs.	
HARDWARE:	7" exhaust tube, FAST Tube starter sampling tube, sampling tube end cap, mounting template, and mounting hardware included	



The SL-701 is a CO system detector, it is not a smoke detector or a CO alarm. It detects carbon monoxide as caused by fossil fuel fired appliances and/or as introduced from the outside in fresh air intakes in the HVAC system. It is intended for use in addition to, not in place of, point-type / open area CO detectors as required by national and local codes.

PRODUCT FEATURES

- ❖ Sensor performs to the National Standards set by OSHA (IAQ) & UL 2075/2034 (Life Safety)
- ❖ Compatible with Building Automation and Combination CO/Fire alarm systems
- ❖ "Snap-in" Sensor is easily replaced at end-of-life
- ❖ Solid green LED on sensor head indicates normal operation
- ❖ Detector Test Mode allows for aerosol CO testing through Test Port with cover in place
- ❖ Historical, retrievable reporting data stored at the unit
- ❖ Unit performs "hidden" self-test every 24 hours to verify sensor life and connections
- ❖ Interconnect up to 30 units for common functions
- ❖ No additional screens or filters to clean
- ❖ Complete wiring details permanently attached to unit

NOTICE: The information contained in this document is intended only as a summary and is subject to change without notice. The products described have specific instructional/installation documentation, which covers various technical, approval, code, limitation and liability information. Copies of this documentation along with any general product warning and limitation documents, which also contain important information, are provided with the product and are also available from Air Products and Controls Inc. The information contained in all of these documents should be considered before specifying or using the products. Any example applications shown are subject to the most current enforced local/national codes, standards, approvals, certifications, and/or the authority having jurisdiction. All of these resources, as well as the specific manufacturer of any shown or mentioned related equipment, should be consulted prior to any implementation. For further information or assistance concerning the products, contact Air Products and Controls Inc. Air Products and Controls Inc. reserves the right to change any and all documentation without notice.